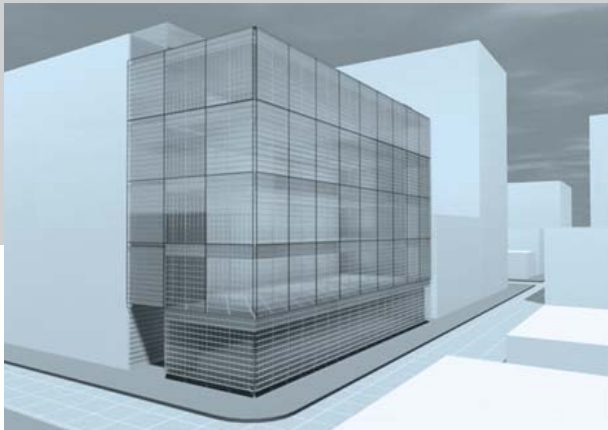




structurally  
integrated  
transparent  
façade system  
[www.situmbra.com](http://www.situmbra.com)

**SITUMBRA** is an innovative façade system suited for window applications in all building segments. It is ideally suited for large highly demanding façade applications. It uniquely provides a combination of structural strength, transparency and energy efficiency.

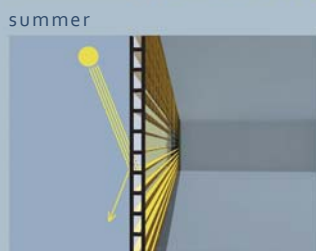
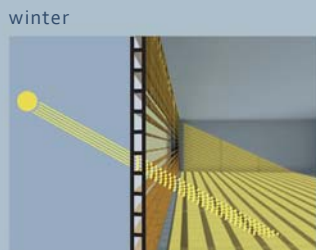


SITUMBRA LLC  
2232 South Main St #364  
Ann Arbor, MI 48103 USA  
734.834.1292 phone  
734.662.9779 fax  
[info@situmbra.com](mailto:info@situmbra.com)



**SITUMBRA**<sup>TM</sup>  
passive solar façade

environmental architectural structural retrofits interiors exteriors



integral shading

solar seasonal



8-knot

hex

circle

quad



customized formations

## an aesthetic window façade system from biocomposite and recyclable materials for building applications

**SITUMBRA** is a passive solar façade that mediates between the seasons to reduce solar heat gains in summer and allow useful solar transmission in the winter. The shading configuration can be customized to suit regional locations and seasons. Its unique combination of materials and geometry provides excellent thermal insulation.

### GREEN CLEAN TECHNOLOGY

- energy efficient façade system
- passive solar shading
- recyclable materials
- renewable resource materials

### HIGH PERFORMANCE WINDOW

- lightweight and long spans
- high impact resistance
- minimal joints
- exterior and interior applications

### CUSTOMIZABLE PRODUCT

- automated manufacturing system
- customized choices for: size, geometry, color, materials
- configured for location and climate



biocomposite materials



curtain wall system



fractal variations

a passive solar façade that is transparent, energy efficient, & structural